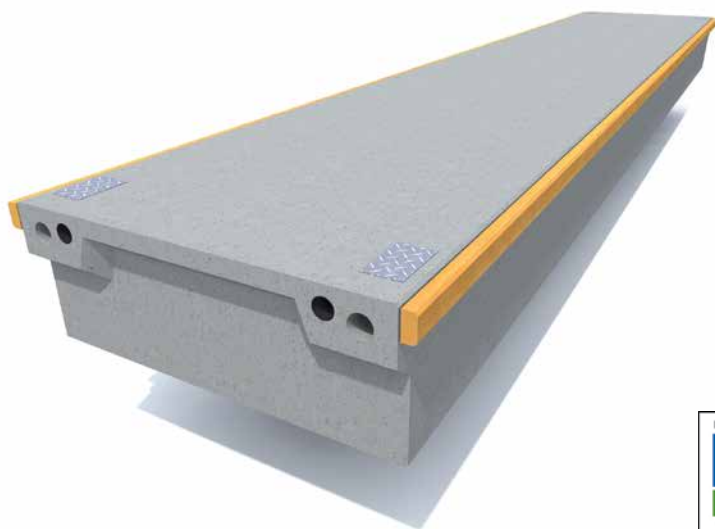


All-Concrete pontoons 2400, 2600, 3000

The **All-Concrete Pontoon** represents the latest know-how in the pontoon technology. It is inexpensive but still strong, stable and gives a very long service life. Its innovative connection boxes and mooring wells are rust-proof and the semi flexible rubber-bolt joints maintenance free. The pontoon has also been designed for economic freight and easy installation. It can be fitted up to 7,5 t bollards. The pontoon can be moored by piles or chain or Seaflex through the mooring wells.



TECHNICAL DATA

Concrete strength: 45 N/mm² steel reinforced plastic fibre concrete.
Exposure class according to European EN 206-1 standard

Core: Expanded polystyrene, density 15 kg/m³

Reinforcement: Partly or fully hot dip galvanised steel

Optional accessories: Timber or wood composite deck, fixing rails, finger fixing system, cable ducts and fenders (timber or wood plastic composite)



FLOATS	M2409AC	M2412AC	M2415AC	M2609AC	M2612AC	M3009AC	M3012AC	M3015AC
Length (m)	8,92	11,92	14,92	8,92	11,92	8,92	11,92	14,92
Width with fenders (m)	2,4	2,4	2,4	2,6	2,6	3,0	3,0	3,0
Concrete width (m)	2,2	2,2	2,2	2,4	2,4	2,8	2,8	2,8
Height (m)	0,85	0,85	0,85	0,85	0,85	0,85	0,85	0,85
Weight (t)	7,0	9,4	11,8	7,5	10,0	8,1	10,8	13,6
Net capacity (kN/m ²)	4,7	4,7	4,7	4,7	4,7	5,0	5,0	5,0
Freeboard (m)	0,47	0,47	0,47	0,47	0,47	0,50	0,50	0,50
Strength of joint (kN)	2x180	2x180	2x180	2x180	2x180	2x180	2x180	2x180
Joint gap (mm)	35	35	35	35	35	35	35	35

Exact unit weight and freeboard are subject to detailed specification of the unit, equipment and mooring methods. Shown numbers are for standard and unloaded units.

Marinetek operates a policy of continuous development and reserves the right to change specifications without notice.

Modification date: 11.9.2015

MARINETEK GROUP OY

Vattuniemenkatu 3
FI-00210 Helsinki
www.marinetek.net

TEL. +358 (0)9 682 4100
FAX +358 (0)9 682 41030
EMAIL info@marinetek.net

MARINETEK