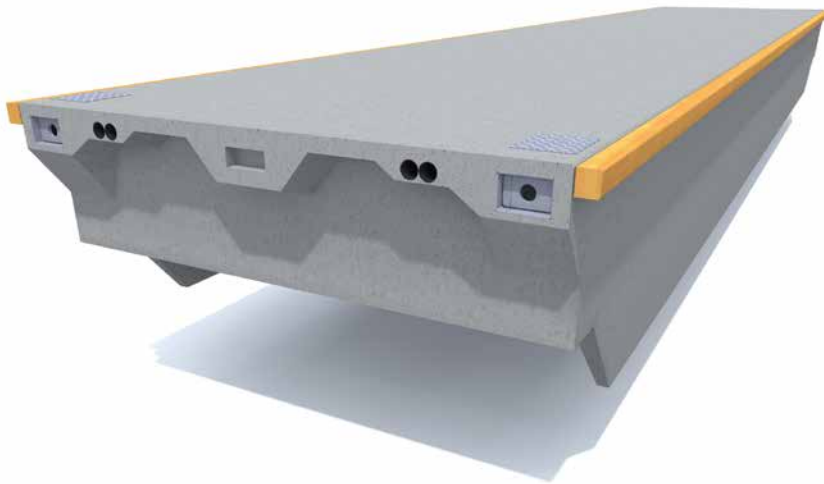


K-series Breakwater 3300K, 4300K, 5300K

Marinetek's world famous **K-series Breakwater** units are massive, extremely strong and have a long maintenance free service life. Professionally designed by experienced engineers these units give the best attenuation performance in their category within the industry. The Marinetek Breakwaters with keels work best when the sea wave lengths is less than 26 m. The features include high freeboard, easy mooring through anchoring wells and exceptionally strong rubber/steel connections. Mooring with chain or Seaflex.



FLOATS	M3312BRK	M3316BRK	M4320BRK	M5320BRK
Length (m)	12,20	16,05	19,90*	19,90*
Width with fenders (m)	3,3	3,3	4,3	5,3
Concrete width (m)	3,0	3,0	4,0	5,0
Height (m)	1,8	1,8	1,8	1,8
Weight (t)	20,9	27,4	40,6	52,1
Net capacity (kN/m ²)	5,5	5,5	6,0	6,0
Freeboard (m)	0,55	0,55	0,60	0,60
Strength of joint (kN)	2x812	2x812	2x812	2x812
Joint gap (mm)	90	90	90	90

*also available with 16,05 m lengths.

Exact unit weight and freeboard are subject to detailed specification of the unit, equipment and mooring methods.

Marinetek operates a policy of continuous development and reserves the right to change specifications without notice.

Modification date: 11.9.2015

MARINETEK GROUP OY

Vattuniemenkatu 3
FI-00210 Helsinki
www.marinetek.net

TEL. +358 (0)9 682 4100
FAX +358 (0)9 682 41030
EMAIL info@marinetek.net

TECHNICAL DATA

Concrete strength: 45 N/mm²
watertight, steel reinforced plastic fibre concrete. Exposure class according to European EN 206-1 standard.

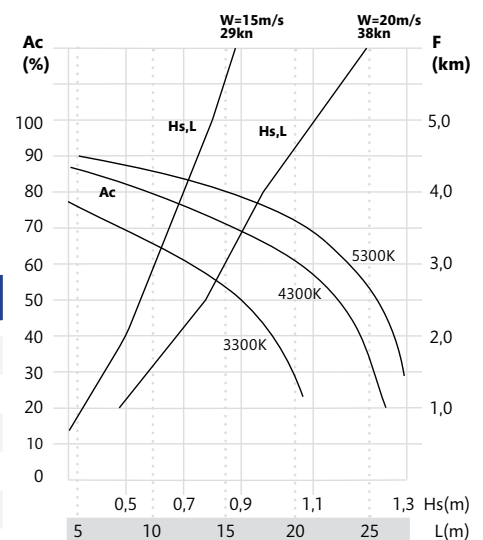
Core: Expanded polystyrene, density 15 kg/m³

Reinforcement: Partly or fully hot dip galvanised steel

Optional accessories: Wooden deck, cable ducts, service channels and fenders (timber or wood plastic composite)

WAVE ATTENUATION CAPACITY

Sheltered sea conditions



F=Effective fetch length. W=Wind velocity.
L=Wave length. Hs=Significant wave height.
Ac=Wave attenuation capacity.



MARINETEK